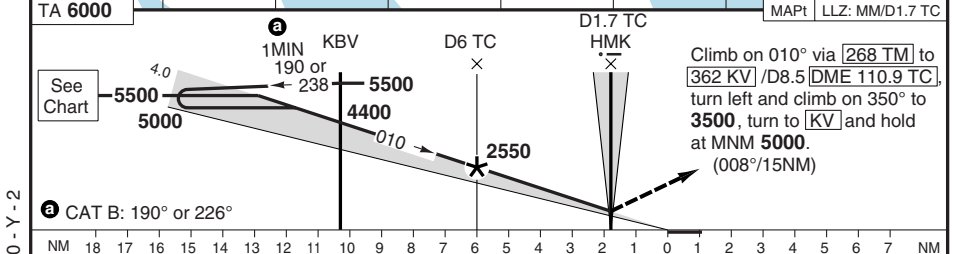
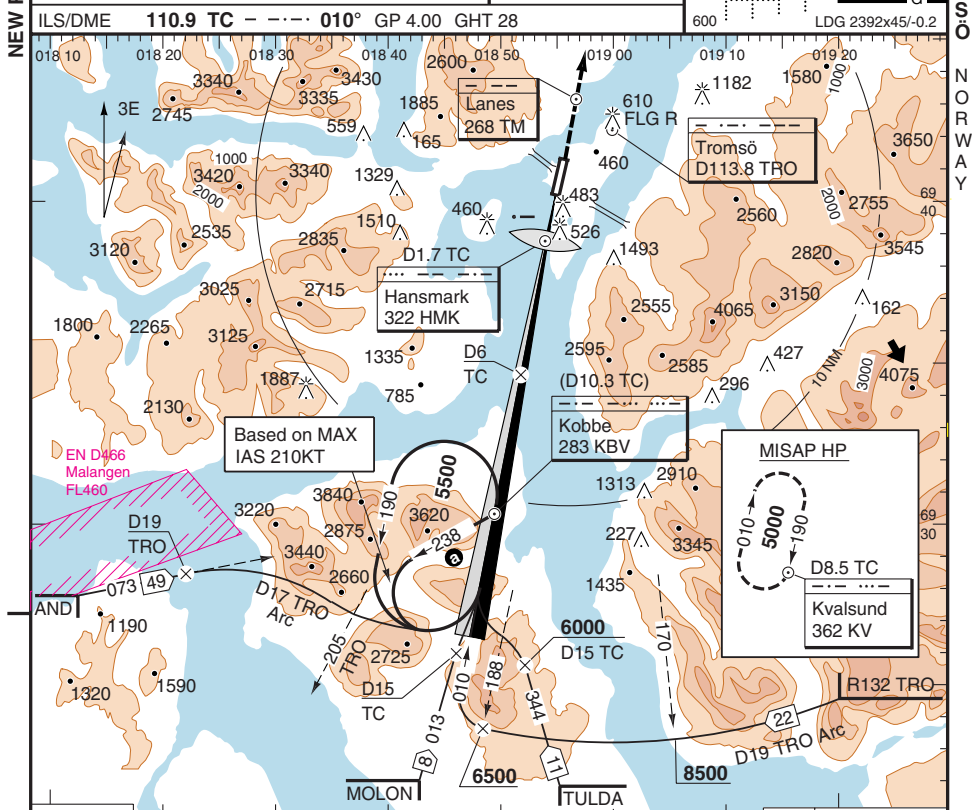


NOT FOR OPERATIONAL USE

NEW PANS - OPS Tromsø TOS - ENTC **1** 20 MAR 00 ILS - 01

ATIS 126.125 07-21
 APP 123.750 MON-SAT 0630-2100, SUN 1130-2100
 TWR 118.300 122.100



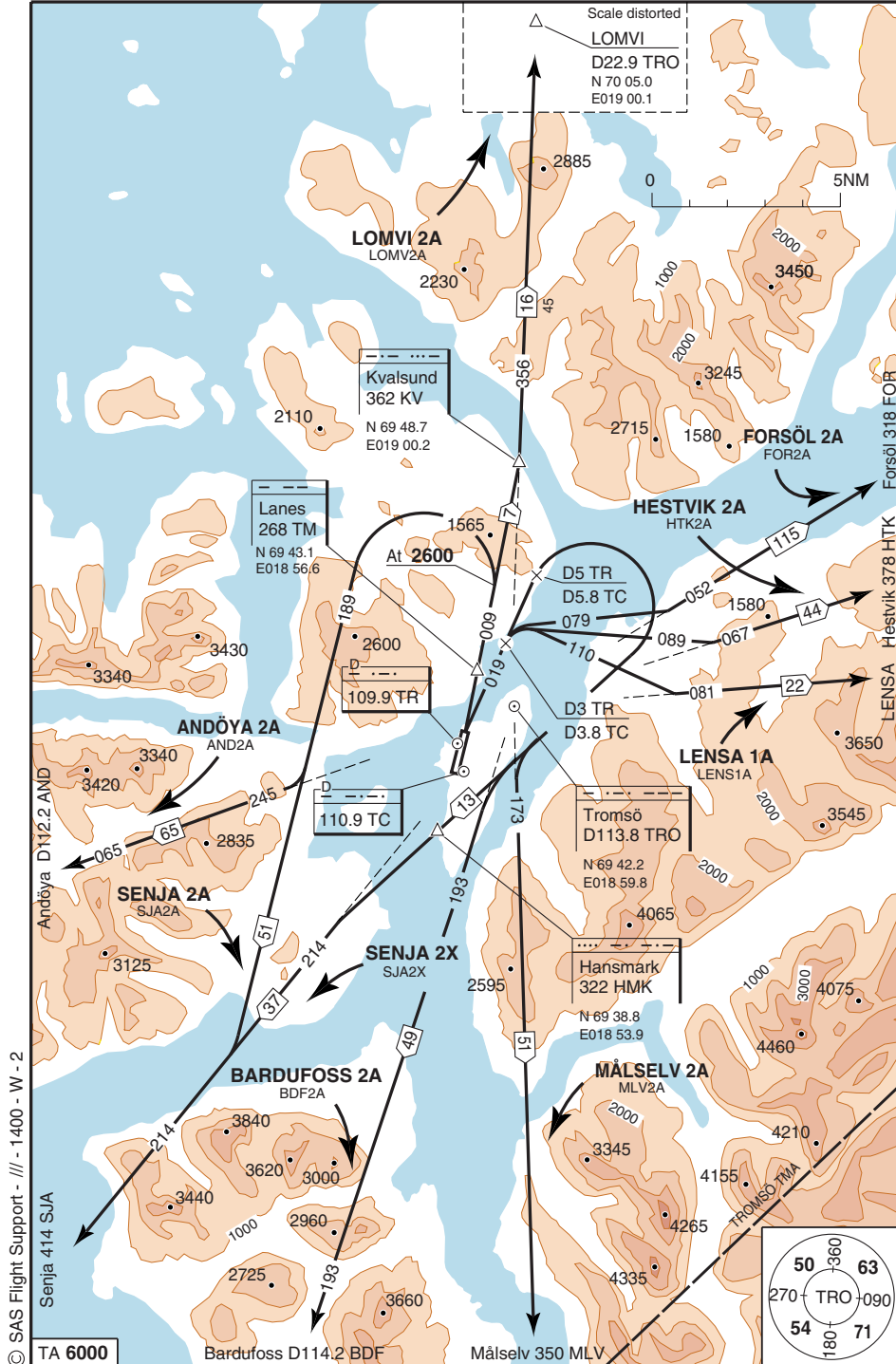
ROD	90KT	640	100KT	710	120KT	850	140KT	1000	160KT	1140
TC	4.0°	ALT	ILS+DME			LLZ+DME			To obtain RVR multiply VIS by:	
D12.9	-	5500	JAA						Day 1.5 Night 2.0	
D11.7	-	5000	ACFT	B	C	D	B	C	D	
D10	-	4280	MIN	620 (595)	640 (610)	650 (625)	670 (646)	690 (666)	720 (696)	
D8	-	3430	RVR-KM	0.90	0.90	0.90	1.5	1.8	2.0	
D6	-	2580	APL U/S	1.2	1.2	1.2	1.5	2.0	2.0	
D4	-	1730								
D3	-	1310								
D2	-	880								

THR ELEV 25 FT/AD ELEV 31 FT Change: Min

© SAS Flight Support - III - 1600 - Y - 2

TROMSØ NORWAY

NOT FOR OPERATIONAL USE



SPEED
 MAX IAS 185KT in turns, or as stated in SID.
 MAX IAS 250KT below FL100.

COM
 When airborne contact Tromsø APP 123.750.

ALT RESTRICTION
 Climb to FL90.

ANDÖYA 2A
 MNM climb gradient 6.2% to 2600.
 Climb via TM towards KV - at 2600 turn L to 189° - R245 TRO - AND.

BARDUFLOSS 2A
 MNM climb gradient 6% to 2700.
 Climb on 019° to D5 TR/D5.8 TC - turn R towards HMK - R193 TRO - BDF.

FORSÖL 2A (CAT B, C ACFT only)
 MNM climb gradient 6% to 2700.
 Climb on 019° to D3 TR/D3.8 TC - turn R (MAX IAS 160KT) to 079° - R052 TRO - FOR.

HESTVIK 2A (CAT B, C ACFT only)
 MNM climb gradient 6% to 2700.
 Climb on 019° to D3 TR/D3.8 TC - turn R (MAX IAS 160KT) to 089° - R067 TRO - HTK.

LENSJA 1A
 MNM climb gradient 6.3% to 4200.
 Climb on 019° to D3 TR/D3.8 TC - turn R (MAX IAS 176KT) to 110° - R081 TRO - LENSJA.

LOMVI 2A
 MNM climb gradient 6.2% to 1600.
 Climb on 009° to KV - R356 TRO - LOMVI.

MÅLSELV 2A
 MNM climb gradient 6% to 2700.
 Climb on 019° to D5 TR/D5.8 TC - turn R towards HMK - R173 TRO - MLV.

SENJA 2A
 MNM climb gradient 6.2% to 2600.
 Climb via TM towards KV - at 2600 turn L to 189° - R214 TRO - SJA.

SENJA 2X
 MNM climb gradient 6% to 2700.
 Climb on 019° to D5 TR/D5.8 TC - turn R to HMK - R214 TRO - SJA.

© SAS Flight Support - 111 - 1400 - W - 2
Senja 414 SJA
Andöya D112.2 AND
Bardufloss D114.2 BDF
Målselv 350 MLV
TA 6000

Change: LENSJA 1A, SID designators, Radial, ALT, MT, DME FIX, DIST, FMS, OBST

WEF 15 JUN

SPEED
MAX IAS 250KT below FL100.

a If CLRD APCH

MNM 5000

MACKA
D13 TRO
N 69 50.6
E018 31.5

D13 TRO Arc

Lanes
268 TM
N 69 43.1
E018 56.6

Kvalsund
362 KV
N 69 48.7
E019 00.2

Tromsø
D113.8 TRO
N 69 42.2
E018 59.8

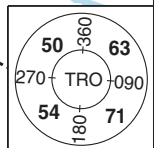
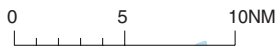
EN D467
Ytre Malangen
FL460

SKARV
MNM 5500
D26.6 TRO
N 69 24.3
E018 03.8

EN D466
Malangen
FL460

SENJA 6D
SJA6D

Senja
414 SJA
N 69 09.7
E017 49.0



NOT FOR OPERATIONAL USE