

M  
A  
D  
E  
I  
R  
A

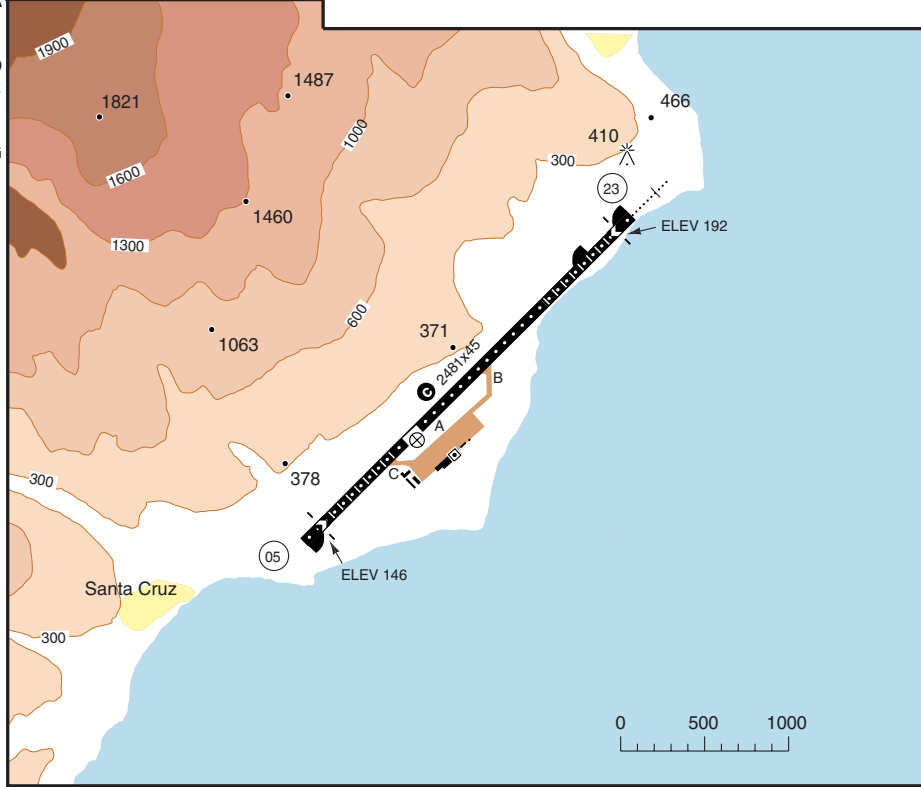
RWY	QFU	APL	THL	RWL	SLOPE
05	052	H-E <b>a</b>	HL	HL	+0.6
23	232	H-E <b>b</b>	HL	HL	-0.6

**a** Lead-in-lighting system along shore. Length 1583M, with 17 sequenced flashing lights (xenon), starting from coastline and terminating 2034M from THR, 150M, EFAS, REIL, PAPI 3.00L/R (both slewed 5° to the right).

**b** 420M, PAPI 3.00L, REIL

**c** Avbl length RWY 05/23 TKOF 2631M

P  
O  
R  
T  
U  
G  
A  
L



NOT FOR OPERATIONAL USE

TKOF	RWY	06/24	
	CLG/RVR or VIS KM	<b>600/3.0</b>	

RF: CAT 7, higher CAT AVBL O/R.

© SAS Flight Support - lpma001st/s00

Change: AD name, AD code

WEF 02 NOV

**A. GENERAL**

1. **NIGHT FLIGHT RESTRICTION**  
During all LDG 05 and TKOF 23, the 05 APL must be on (APL 05 bidirectional). TDL and CLL are highly desirable for LDG at night. If TEMPO not avbl, special judgement and caution must be used.
2. **RESTRICTIONS**  
To operate at Madeira, PIC must meet following CAA experience requirements:
  - MNM 200 HR as captain on ACFT type in use.
  - MNM one TKOF and LDG at Madeira the last six months or MNM one flight under supervision of a qualified pilot.
3. **WARNING**  
Caution during final APCH and TKOF due to birds.
4. For commercial OPS only ACFT with tricycle landing gear are permitted to land.
5. All TKOF and LDG are to be made in visual conditions.
6. **WIND INFORMATION**  
On down wind and final APCH to RWY 05 TWR will give 2 MIN mean winds at Rosario and touch-down.
7. **WIND LIMITATIONS**  
RWY 23 LDG/TKOF MAX wind gust: 25KT.
  - a) LDG  
In the sector 300° to 020° MAG, MAX permitted intensity is 15KT, with MAX gust of 25KT.  
  
In the sector 020° to 050° MAG, MAX permitted intensity is 20KT, with MAX gust of 25KT.  
  
In the sector 120° to 230° MAG, MAX permitted intensity is 10KT.  
  
These limitations are in relation to touch-down anemometer 2 MIN mean wind values only.
  - b) TKOF  
In the sector 300° to 020° MAG, MAX permitted intensity is 20KT.  
  
In the sector 020° to 050° MAG, MAX permitted intensity is 25KT.  
  
In the sector 120° to 230° MAG, MAX permitted intensity is 10KT.  
  
These limitations are in relation to DEP end of RWY anemometer 2 MIN mean wind values only.

**8. TURBULENCE**

Attention should be paid to the WIND DIRECTION INDICATORS located on south side of the RWY, near each touch-down area. They will reflect unexpected wind changes. Occasionally they will indicate wind from opposite directions.

When LDG on RWY 05 wind differences higher than 5KT, between Rosario and TWR, may indicate turbulence on final.

Headwind or nearly so up to 15KT will originate "WEAK" turbulence on final.

Wind of 15KT from sector 020° to 050° MAG (clockwise) may originate "MODERATE" turbulence.

Wind of 15KT or even less from sector 300° to 020° MAG (clockwise) may originate "SEVERE" turbulence.

Downdrafts or updrafts to be expected near THR of RWY 05 and 23.

**9. NOTE**

Due to turbulence and windshear it is highly recommended that APCH and LDG speeds will be increased by adequate margins.

Pilots are strongly requested to report any operational problems (turbulence, windshear, lights etc) to TWR.

**10. NAV RESTRICTIONS**

- VOR/DME FUN U/S BTN 240°-310 (clockwise).
- NDB MAD U/S BTN 240°-290° (clockwise).

**B. ARRIVAL**

1. **RWY 05**  
Do not fly to the left of APCH LGT path, due high terrain.  
PAPI on the right not visible on short final.
2. **RWY 23**  
Do not deviate to the right of extended centre line of RWY 23, due high terrain.  
  
At night the hills to the right may be confused with mist.
3. A go around manoeuvre should be performed if ACFT has not landed by the end of TDL.
4. For visual APCH: See IAL 3.
5. **PARKING**  
Nose in - Push back.

NEW PANS - OPS

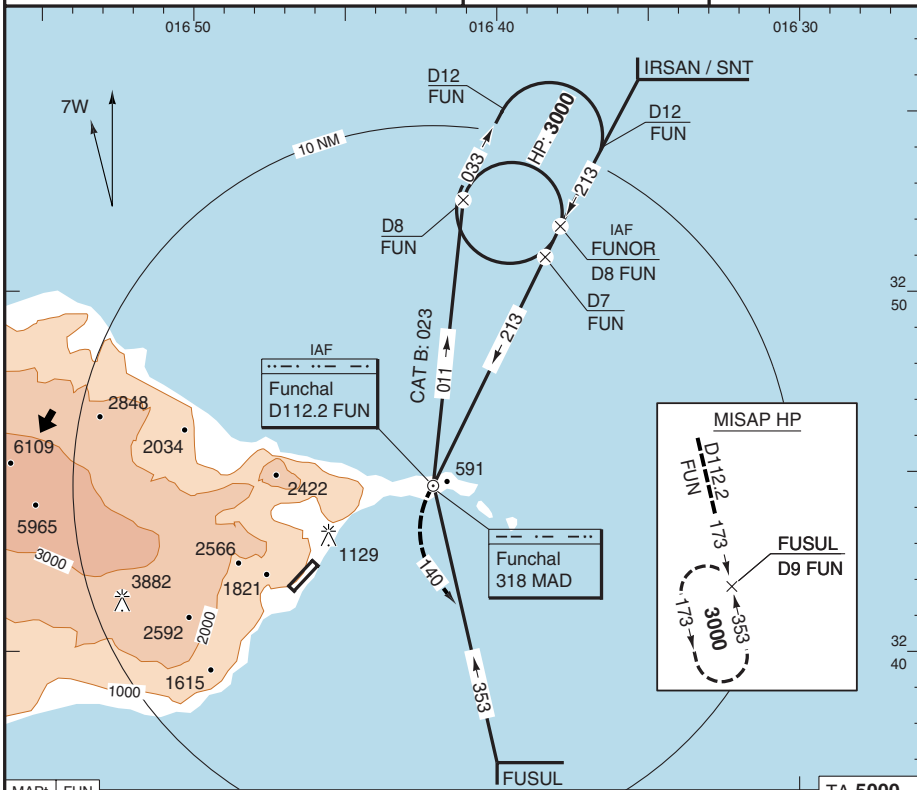
Madeira  
 APP 119.200 118.100  
 TWR 118.100

FNC - LPMA **2** 20 OCT 00

(VOR/DME) **VOR - 213**

PAPI 3.00L  
 LDG 2481x45/-0.6 420

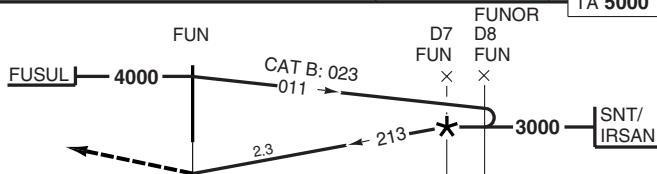
M A D E I R A  
 P O R T U G A L



MAPt FUN

TA 5000

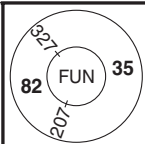
Turn left HDG 140°. Intercept R173 [D112.2 FUN] and climb to 3000 to FUSUL.



NM 6 5 4 3 2 1 0 1 2 3 4 5 6 7 8 9 10 11 12 13 14 15 16 NM

FUN	3.0°	ALT	GS/KT	ROD	STATE	VOR+DME Circling
D5.2	-	3000	90	480	ACFT	B C
D4	-	2610	100	540	MIN	1330 (1200) *
D3	-	2290	120	640	VIS-KM	5.0
D2	-	1970	140	750	APL U/S	5.0
D1	-	1650	160	850		

⚠ E of AD; See IAL 3  
 \* CEILING REQUIRED



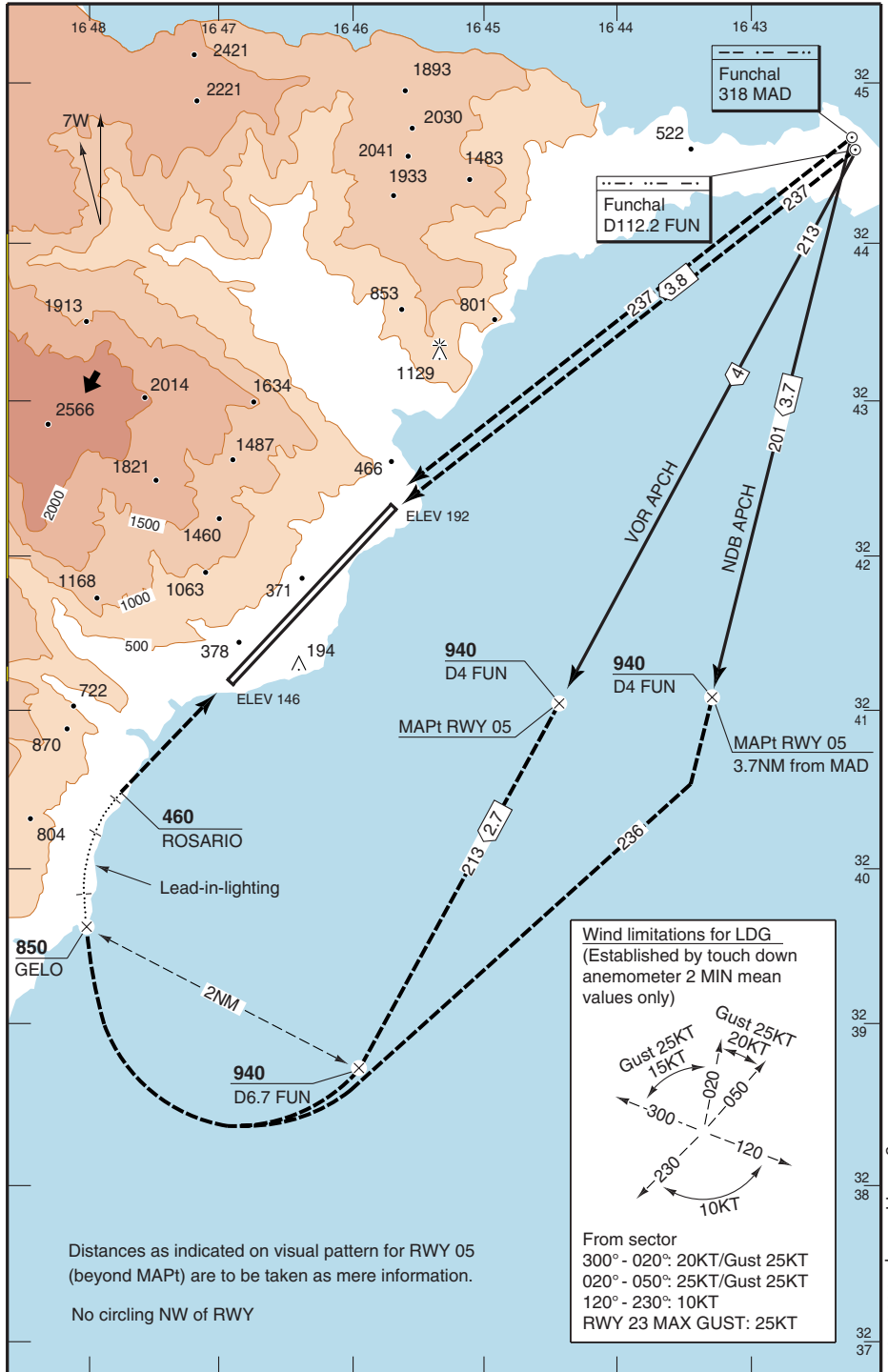
© SAS Flight Support - lpma021s00 - 500 - Y - 2

THR ELEV 192 FT/AD ELEV 192 FT Change: AD name, AD code

WEF 02 NOV

NOT FOR OPERATIONAL USE

M A D E I R A  
P O R T U G A L



**Wind limitations for LDG**  
 (Established by touch down  
 anemometer 2 MIN mean  
 values only)

From sector  
 300° - 020°: 20KT/Gust 25KT  
 020° - 050°: 25KT/Gust 25KT  
 120° - 230°: 10KT  
 RWY 23 MAX GUST: 25KT

Distances as indicated on visual pattern for RWY 05 (beyond MAPt) are to be taken as mere information.

No circling NW of RWY

Change: AD name, AD code, Wind limitations

WEF 02 NOV

© SAS Flight Support - lpma031stfs00

NOT FOR OPERATIONAL USE